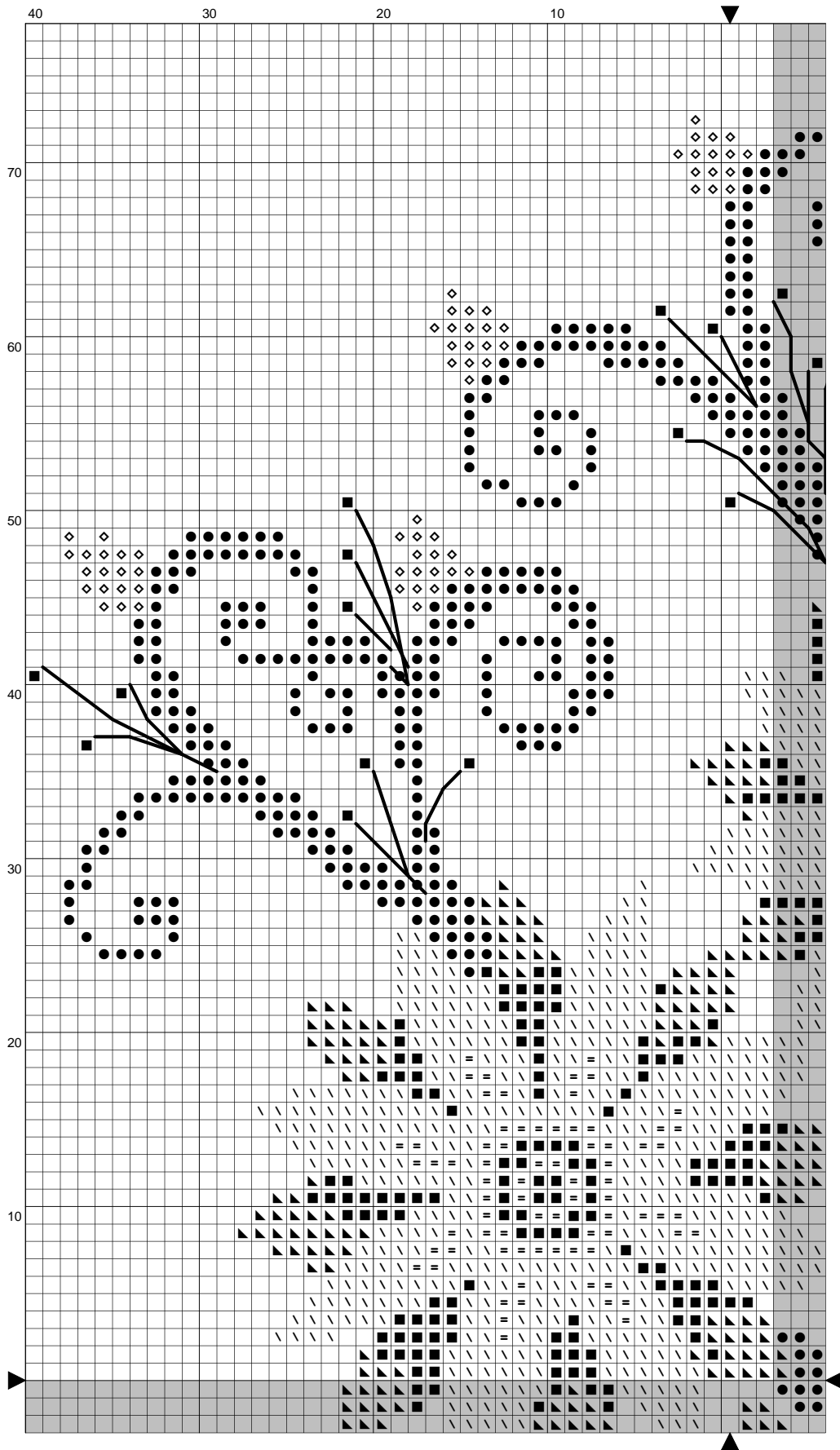


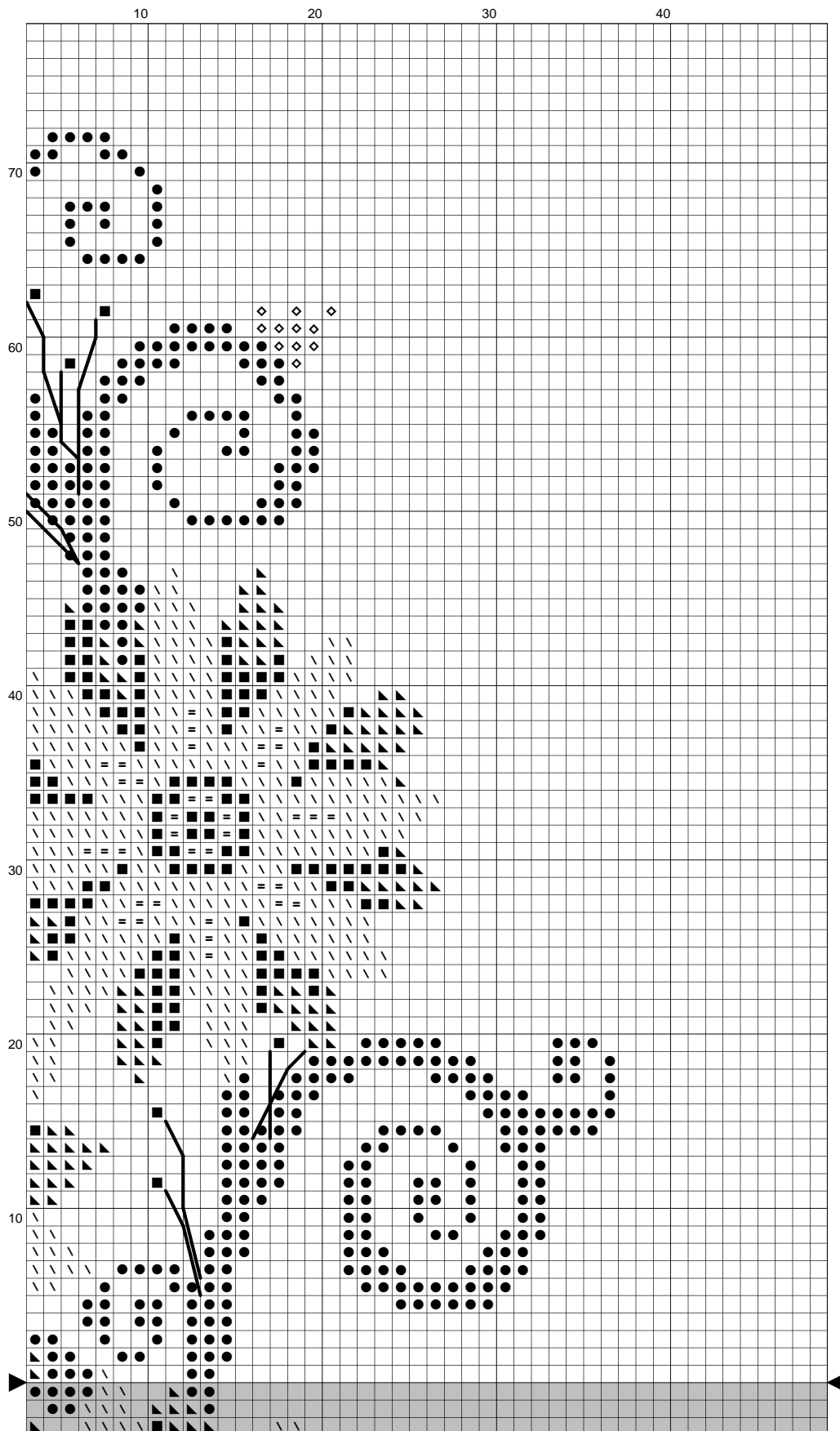
STITCHX

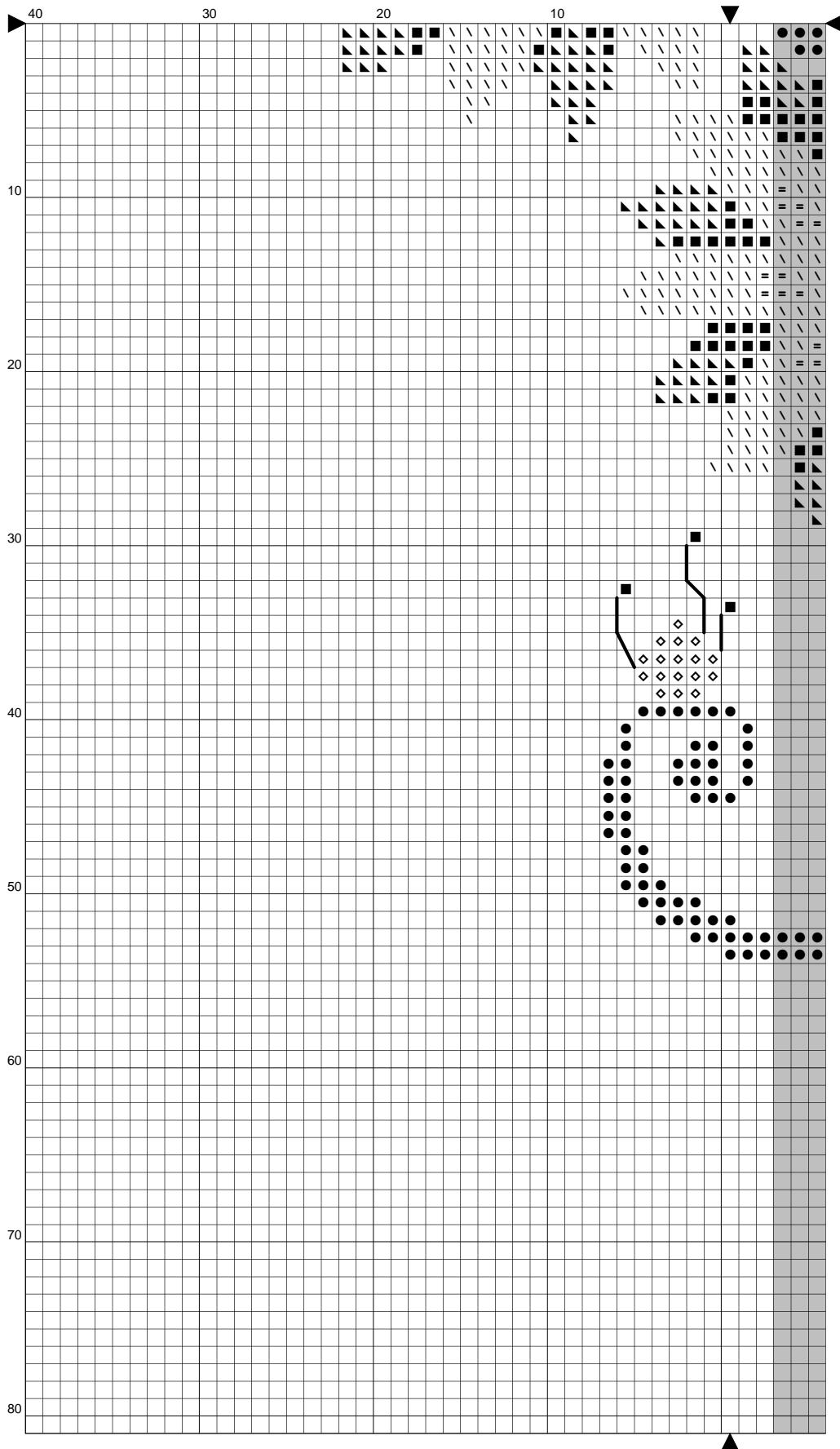
Swirly Flowers

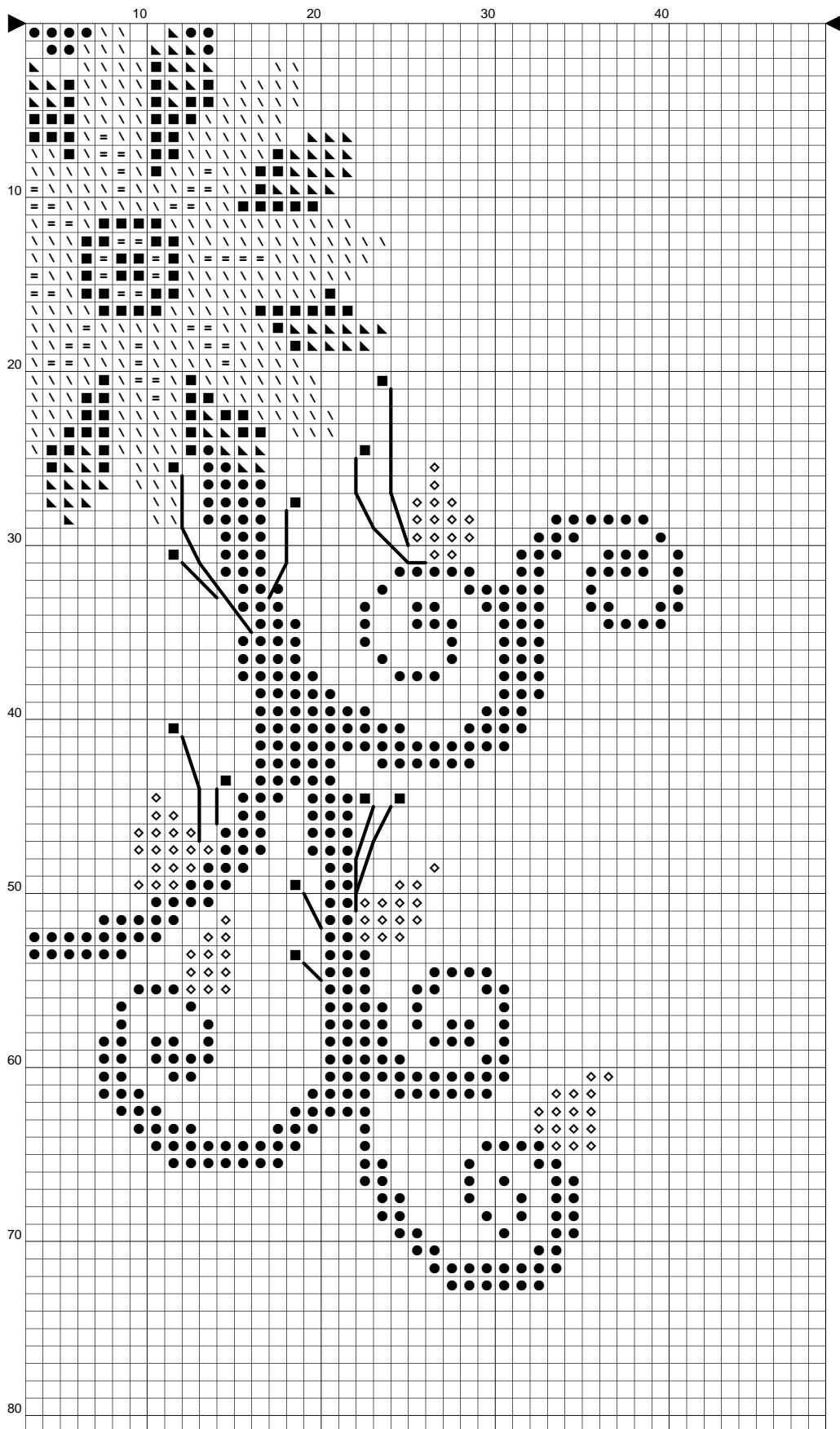


©2009 StitchX.com
All rights reserved.









Instructions and Symbol Key for Design "Swirly Flowers #1"

Fabric: 14 count

Stitches: 81 x 146 **Size:** 5.79 x 10.43 inches or 14.70 x 26.49 cm

Colours: DMC

Use 2 strands of thread for cross stitch

<u>Sym</u>	<u>No.</u>	<u>Colour Name</u>	<u>Sym</u>	<u>No.</u>	<u>Colour Name</u>
●	703	Springtime green	\	3716	Candyfloss pink
■	3731	Dark Hydrangea pink	◇	3348	Lettuce heart green
=	5200	B Bright white	▲	962	Light dusty rose

Use 1 strand of thread for backstitch

	DMC 3731	Dark Hydrangea pink
---	----------	---------------------

This chart has been designed and printed with our best intentions of being without mistakes. However, the possibility of human error, printing mistakes or the variation of individual stitching does exist, and we regret that we cannot be responsible for this.

Note: The shaded blocks on the chart represent overlapping stitches.

STITCHING INSTRUCTIONS:

The finished design size is shown above the floss key. Be sure to add about 8 inches to each dimension, so that you will have plenty of room for matting and framing. For example, if the design size is 20" x 24", purchase fabric size that is at least 28" x 32".

If possible, serge or zig-zag the edges of your fabric before beginning stitching.

For best results, print 2 copies of pattern. Use one for a master copy and one for marking as needed. With your master copy, lay out all pages according to diagram below and tape together before stitching. Use this set as a reference.

Using your working copy, find the page that you will start stitching with and use it to mark with your highlighter or pencil as you stitch. When you have finished a large section or a full page, be sure to mark that entire section out on your master copy.